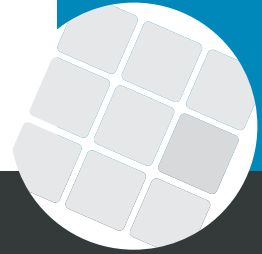




PT FIVE

Financial
Information
Virtual
Environment



PT Five, a new, easy to use desk top tool dedicated to both professional and non-professional traders. Based on Java web start technology, it enables users to manage realtime financial information quickly and simply using "data push".

The scenario

In the highly competitive world of financial institutions, innovation and the use of new technology are no longer seen simply as functions to support core banking operations. These have become fundamental elements that condition strategies during reorganization of internal processes and make them critical factors in change.

The problem

In order to take maximum advantage of the opportunities that information offers, financial professionals need to have access to tools that allow them to integrate data from multiple sources and multiple information providers, in one, unique display. The solution must be at the forefront of technology, guarantee performance, simple to use with true real-time updates. Order entry and trade tracking functionality complete the list of requirements of high-level users.

The solution

PT Five is a simple to use client application for the professional trader, maximizing interactive use of exchange information, news and historical data over the web. The investor has the following powerful functionality at his fingertips:

- order management to buy, sell and track: equities, derivatives and other instruments from the worlds' major exchanges,
- online, real-time updates with access to complete financial information for a 360° view of the worlds markets.

PT Five is more than just an application to access generic financial data or an online trading console. It is a "Financial Information Virtual Environment" – with which professional traders or retail investors can operate in a fully interactive and secure environment.

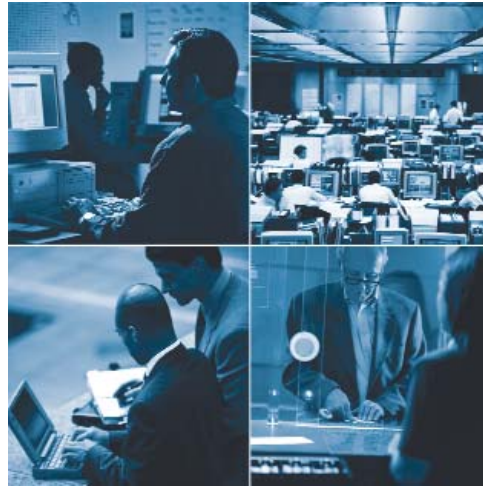
Functionality

PT Five has been developed to meet the needs of all levels of traders and professionals, where access to multiple sources of data, markets and financial information is fundamental for successful results. With **PT Five**, this is achieved. **FROM ONE SINGLE DESKTOP** users can easily and quickly interrogate all the financial information and traded instruments necessary for them, using multiple sources .

PT Five can also be integrated into bank portals, supplying greatly increased added value to the financial services offered to clients, providing them with a tool to autonomously manage their portfolio.

These characteristics also make **PT Five** an optimal instrument for other key users such as:

- professionals within the bank (sales, management, research, client support teams, branch officers),
- external sales agents who need remote access to real time data.



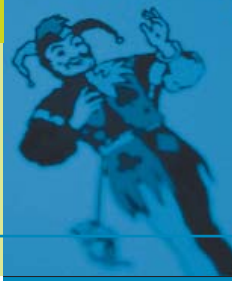
Today, more than ever, innovation and the use of new technology represent key factors in the processes of reorganization and also influence strategies.

Functions

PT Five is not simply an online trading tool, but a "virtual environment" where a wider public than just professional traders can manage all the data and information available to them.

- user recognition and profiling
- quotes
- chains
- watch lists
- news, from both internal sources and external feeds
- historical data instrument searches
- daily and Intraday series
- data displayed in both Pull and Push
- simple and complex graphs
- supports all key technical analysis indicators including oscillators
- order entry with portfolio and trade management
- high level personalized desktop structure and layout
- multiple workspaces
- integration with external tools
- spreadsheet integration via DDE in data Push
- application can be used anywhere in the world





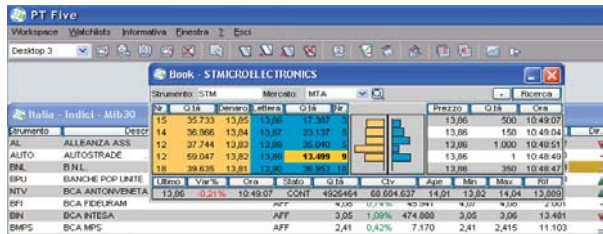
Technology

PT Five is an application developed in pure Java using the very latest generation of J2SE. Once installed on a PC, **PT Five** can **update itself automatically**; this means that the users always have the very latest version of the software available.

For data updates in Push, **PT Five** uses Lightstreamer, a highly innovative, data streaming server, that provides the latest market data, delivered in Real-Time to the DeskTop for price tracking and order entry and management.

Technical details

- Multi-platform
- Integrated with Lightstreamer for Push updates (bandwidth management, congestion detection, network overloads)
- Compatible with all network configurations (proxy and firewalls of every kind)
- Personalized graphic layout (house colours, standards and typefaces)
- Integrated with the most advanced technical analysis systems and graphics
- Configurable

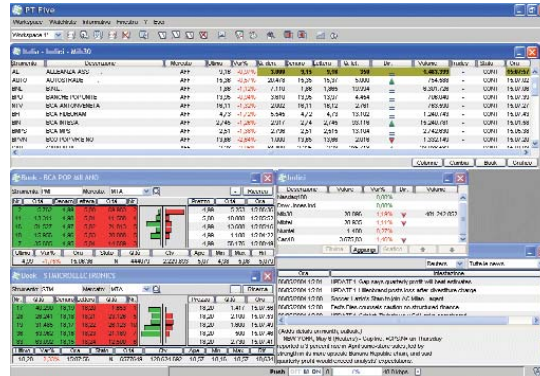


Application characteristics

A simple but powerful graphics interface (GUI), brings significant functional advantages to the desktop console, enabling the user to interact with the application, improving performance and quality.

All users will find that **PT Five** is exceptionally:

- **easy to understand** because the application uses paradigms common to PC's (windows, menu, drag and drop, toolbars) as an interface, greatly reducing learning time,
- **simple to use**. The interface is very quick, simple and intuitive, enabling a more fluid use of the product, avoiding unnecessary keystrokes. A pleasure to use,
- **easy to personalize**. The user can configure the desktop, choosing from the menu, graphics (columns, sorting order and colours). The "multi-window" logic used, permits the trader to track multiple elements of financial information and maintain order entry functions.



A Virtual environment for financial data management. Gives users the power to access high level financial information, rapidly, simply, precisely.

Sol-Tec products for l'eFinance

Sol-Tec has been providing solutions to the banking and finance world for many years. Our core-competence is in development and in project based solutions, becoming a key technology partner supplying online financial solutions to major banks and financial groups.

PT Five is part of a suite of products and leading-edge technologies developed for the online finance sector. A range of modular solutions – scalable and perfectly integrated between them:

- **baMca** - Multi-channel framework,
- **MFI Cast** - Middleware to manage financial information,
- **Lightstreamer®** - Innovative PUSH Technology.

All the products in the suite are designed so that new functionality can be implemented or integrated to meet a customers particular needs or special development requirements **quickly and simply**.



A trading tool that fully empowers users, whether professionals or not, to manage all the information they need, integrating data from multiple sources.

Contact

Sol-Tec
Soluzioni tecnologiche Srl
Via Campanini 6
20124 Milano
tel. +39 02 66732.1
fax +39 02 66732300
www.sol-tec.it
mktg@sol-tec.it